



Frodsham Solar

Land and Crown Land Plans

May 2025



PINS Ref: EN010153

Document Ref: EN010153/DR/2.2

Planning Act 2008; and Infrastructure Planning (Applications: Prescribed Forms and Procedure) Regulations Regulation 5(2)(i) & 5(2)(n)

Revision P01

Document Control

Revision	Date	Prepared By	Reviewed / Approved By
P01	May 2025	J. Neye-Swift	L. O'Brien / A. Crow

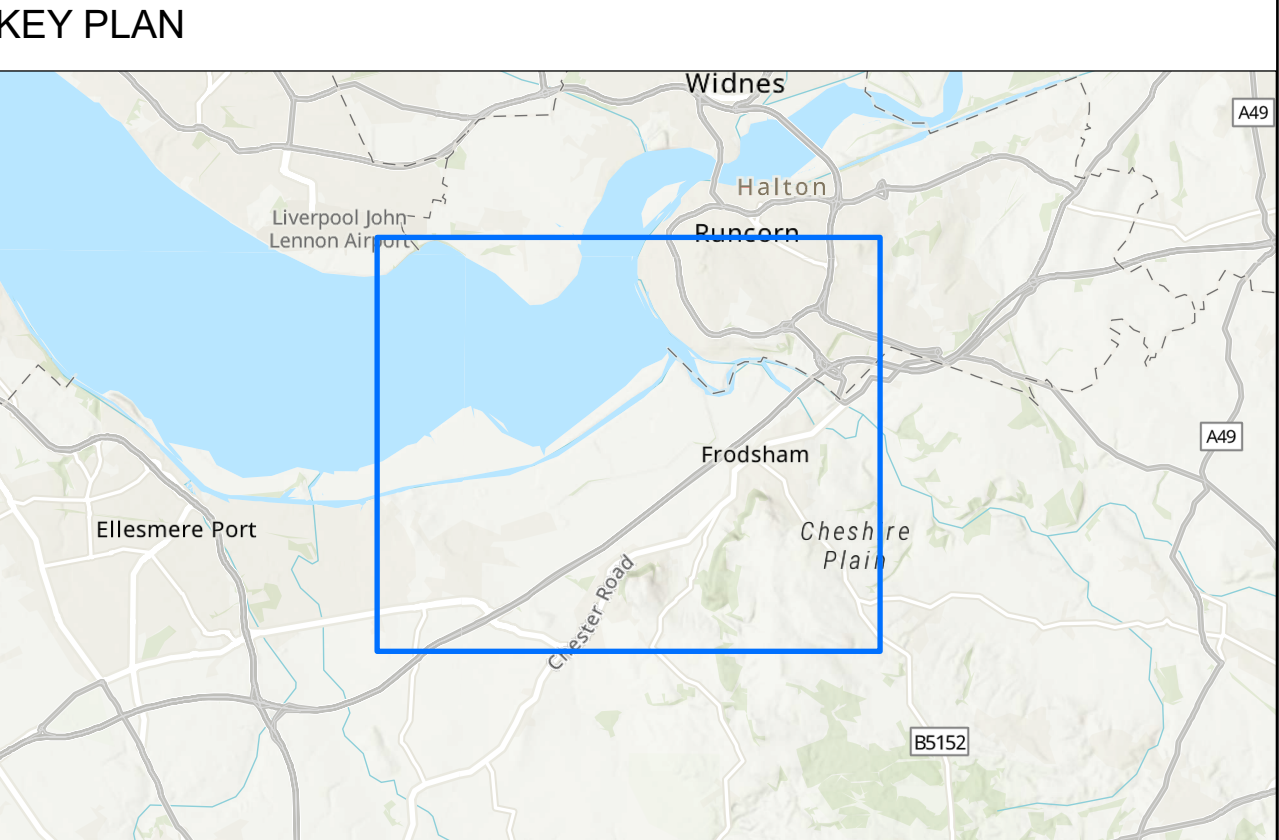
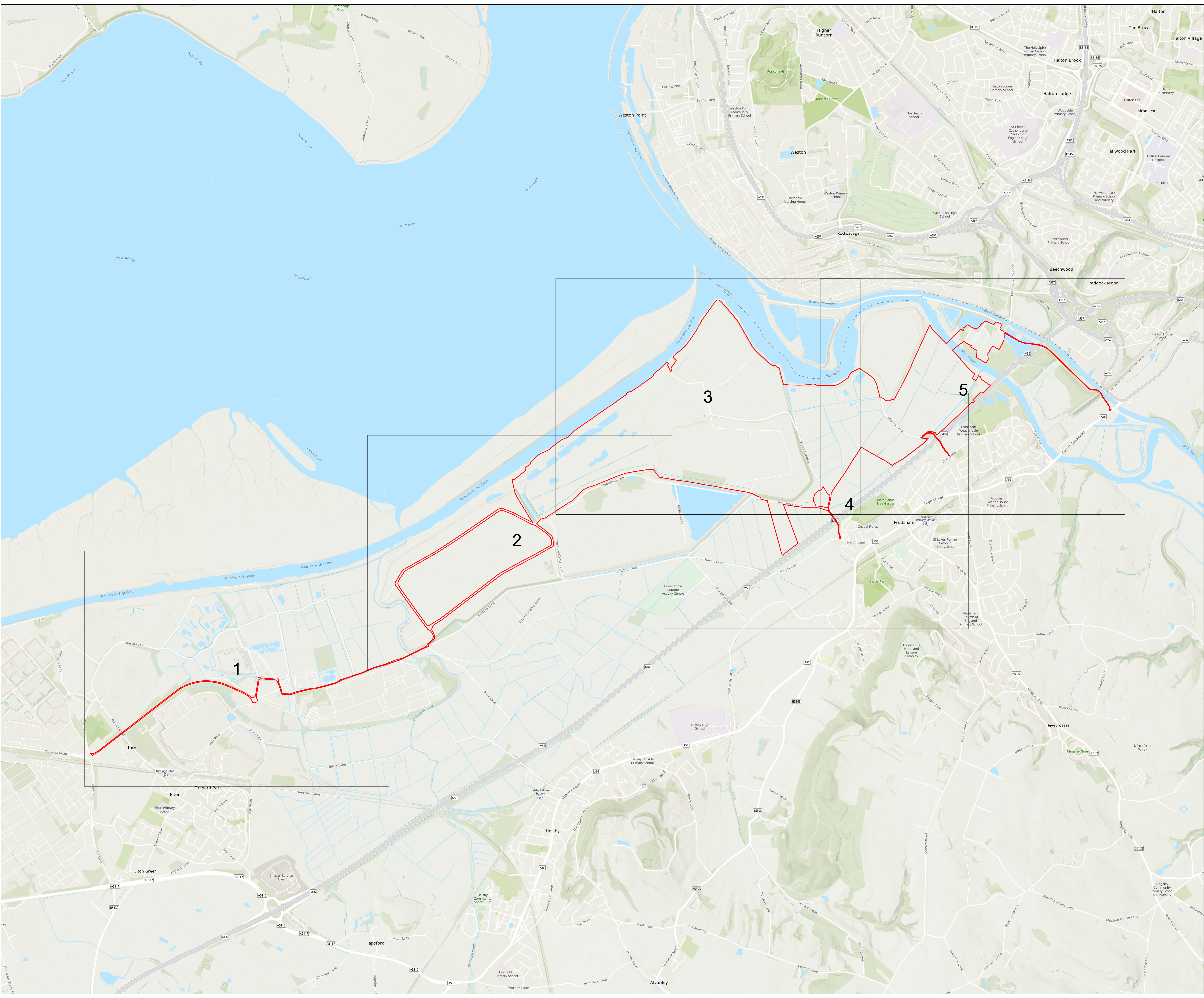
© AXIS P.E.D. Ltd 2025. All rights reserved.

This document and its accompanying documents contain information which is confidential and is intended only for the use of the client. If you are not one of the intended recipients any disclosure, copying, distribution or action taken in reliance on the contents of the information is strictly prohibited.

Unless expressly agreed, any reproduction of material from this document must be requested and authorised in writing from AXIS P.E.D. Ltd. Authorised reproduction of material must include all copyright and proprietary notices in the same form and manner as the original and must not be modified in any way. Acknowledgement of the source of the material must also be included in all references.

Prepared For:
Frodsham Solar Ltd

Prepared By:
Ardent



Notes

1. All dimensions, chainages, levels and co-ordinates are in metres unless stated otherwise.

2. These Land Plans should be read in conjunction with other plans and documents in the application for development consent, in particular the Book of Reference, Statement of Reasons, Development Consent Order, and the Land and Right Negotiation Tracker.

Regulation 5(2)(i) and 5(2)(m) - Infrastructure Planning (Applications: Prescribed Forms and Procedure) Regulations 2009

KEY

Sheet extent and number

Order limits

© Crown copyright and database rights 2025 Ordnance Survey AC000808122. You are permitted to use this data solely to enable you to respond to, or interact with, the organisation that provided you with the data. You are not permitted to copy, sub-licence, distribute or sell any of this data to third parties in any form.

Information produced by HM Land Registry. Crown copyright and database rights 2024. The polygons (including the associated geometry, namely x, y co-ordinates) are subject to Crown copyright and database rights 2024 and are reproduced with the permission of Ordnance Survey.

World Hillshade: Esri, Intermap, NASA, NGA, USGS
World Topographic Map: Sources: Esri, TomTom, Garmin, FAO, NOAA, USGS, © OpenStreetMap contributors, and the GIS User Community



Client

FRODSHAM SOLAR LIMITED



Project

FRODSHAM SOLAR

Drawing Title

LAND AND CROWN LAND PLANS

KEY PLAN

Status		Revision		P01			
FOR DCO SUBMISSION				Date		29/05/2025	
Scale: 1:10,000		@ A0		Spatial Reference System		British National Grid	
0		500		1,000		Metres	
Drawn By		Checked By		Approved By			
J.NEYE-SWIFT		L.O'BRIEN		A.CROW			
Drawing reference							
081_ARDG_FSF_LP_CL							
This document is not to be used in whole or in part other than for the intended purpose and project for which it was prepared and provided.							



KEY PLAN

Notes

1. All dimensions, chainages, levels and co-ordinates are in metres unless stated otherwise.

2. These Land Plans should be read in conjunction with other plans and documents in the application for development consent, in particular the Book of Reference, Statement of Reasons, Development Consent Order, and the Land and Right Negotiation Tracker.

Regulation 5(2)(i) and 5(2)(m) - Infrastructure Planning (Applications: Prescribed Forms and Procedure) Regulations 2009

KEY

Order limits

Permanent acquisition of land

Permanent acquisition of new rights over land

© Crown copyright and database rights 2025 Ordnance Survey AC0000808122. You are permitted to use this data solely to enable you to respond to, or interact with, the organisation that provided you with the data. You are not permitted to copy, sub-licence, distribute or sell any of this data to third parties in any form.

Information produced by HM Land Registry. Crown copyright and database rights 2024. The polygons (including the associated geometry, namely x, y co-ordinates) are subject to Crown copyright and database rights 2024 and are reproduced with the permission of Ordnance Survey.

World Hillshade: Sources: Esri, Maxar, Airbus DS, USGS, NGA, NASA, CGIAR, N Robinson, NCEAS, NLS, OS, NMA, Geodatastyrelsen, Rijkswaterstaat, GSA, Geoland, FEMA, Intermap, and the GIS user community

Cubico

SUSTAINABLE INVESTMENTS

Client

FRODSHAM SOLAR LIMITED

N

↑

Designer

Ardent

Project

FRODSHAM SOLAR

Drawing Title

LAND AND CROWN LAND PLANS

SHEET 1 OF 5

Status

FOR DCO SUBMISSION

Revision

P01

Date

29/05/2025

Scale: 1:2,500

@ A0

Spatial Reference System

British National Grid

0

50

100

150

200

250

300

Metres

Drawn By

Checked By

Approved By

J.NEYE-SWIFT

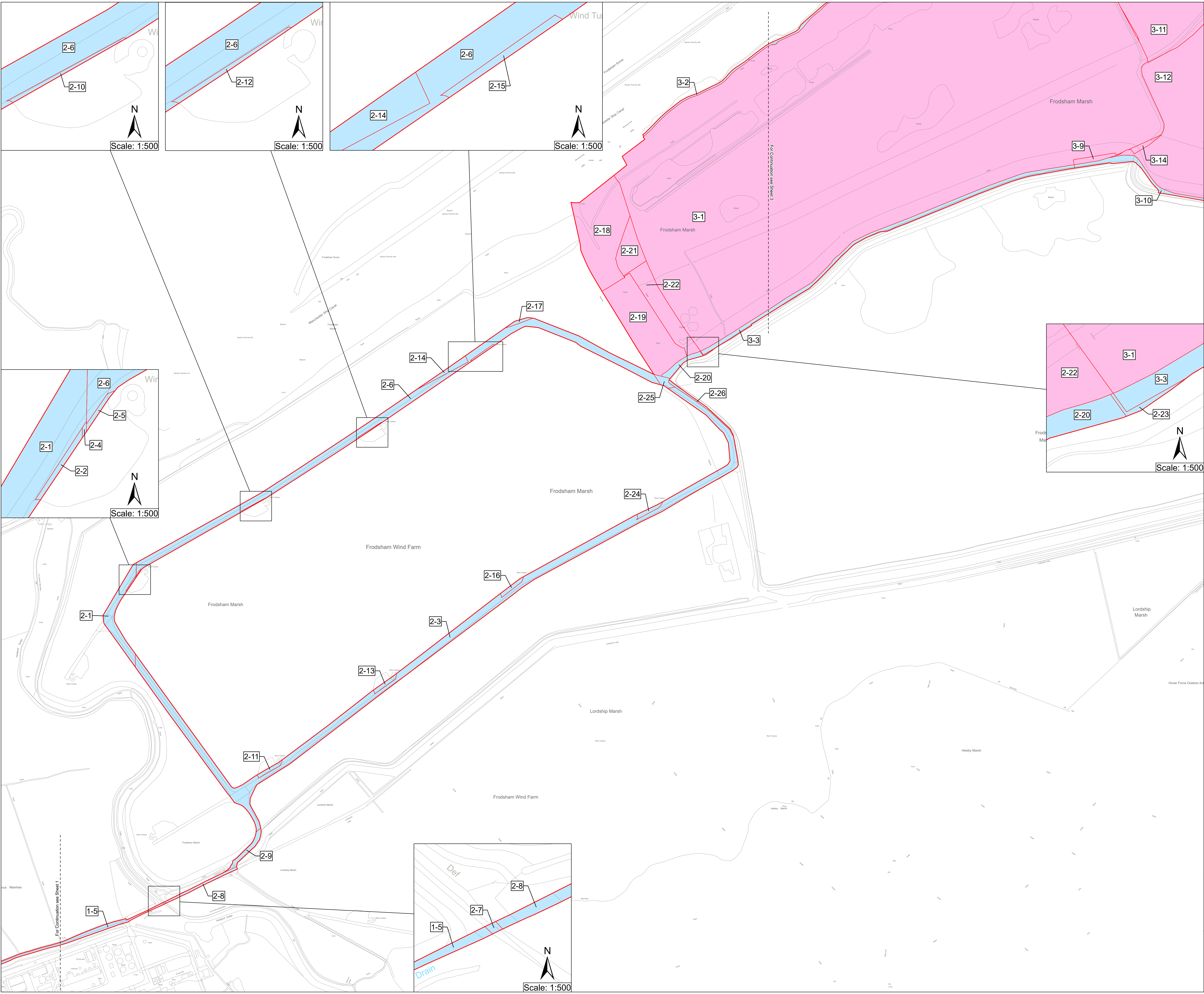
L.O'BRIEN

A.CROW

Drawing reference

081_ARDG_FSF_LP_CL

This document is not to be used in whole or in part other than for the intended purpose and project for which it was prepared and provided.



KEY PLAN

Notes

1. All dimensions, chainages, levels and co-ordinates are in metres unless stated otherwise.

2. These Land Plans should be read in conjunction with other plans and documents in the application for development consent, in particular the Book of Reference, Statement of Reasons, Development Consent Order, and the Land and Right Negotiation Tracker.

Regulation 5(2)(i) and 5(2)(m) - Infrastructure Planning (Applications: Prescribed Forms and Procedure) Regulations 2009

KEY

Order limits

Permanent acquisition of land

Permanent acquisition of new rights over land

© Crown copyright and database rights 2025 Ordnance Survey AC0000808122. You are permitted to use this data solely to enable you to respond to, or interact with, the organisation that provided you with the data. You are not permitted to copy, sub-licence, distribute or sell any of this data to third parties in any form.

Information produced by HM Land Registry. Crown copyright and database rights 2024. The polygons (including the associated geometry, namely x, y co-ordinates) are subject to Crown copyright and database rights 2024 and are reproduced with the permission of Ordnance Survey.

World Hillshade: Esri, Intermap, NASA, NGA, USGS
World Topographic Map: Sources: Esri, TomTom, Garmin, FAO, NOAA, USGS, © OpenStreetMap contributors, and the GIS User Community

Cubico

SUSTAINABLE INVESTMENTS

Client

FRODSHAM SOLAR LIMITED

N

Designer

Ardent

Project

FRODSHAM SOLAR

Drawing Title

LAND AND CROWN LAND PLANS

SHEET 2 OF 5

Status

FOR DCO SUBMISSION

Revision

P01

Date

29/05/2025

Scale: 1:2,500 @ A0 Spatial Reference System British National Grid

0 50 100 150 200 250 300 Metres

Drawn By

Checked By

Approved By

J.NEYE-SWIFT

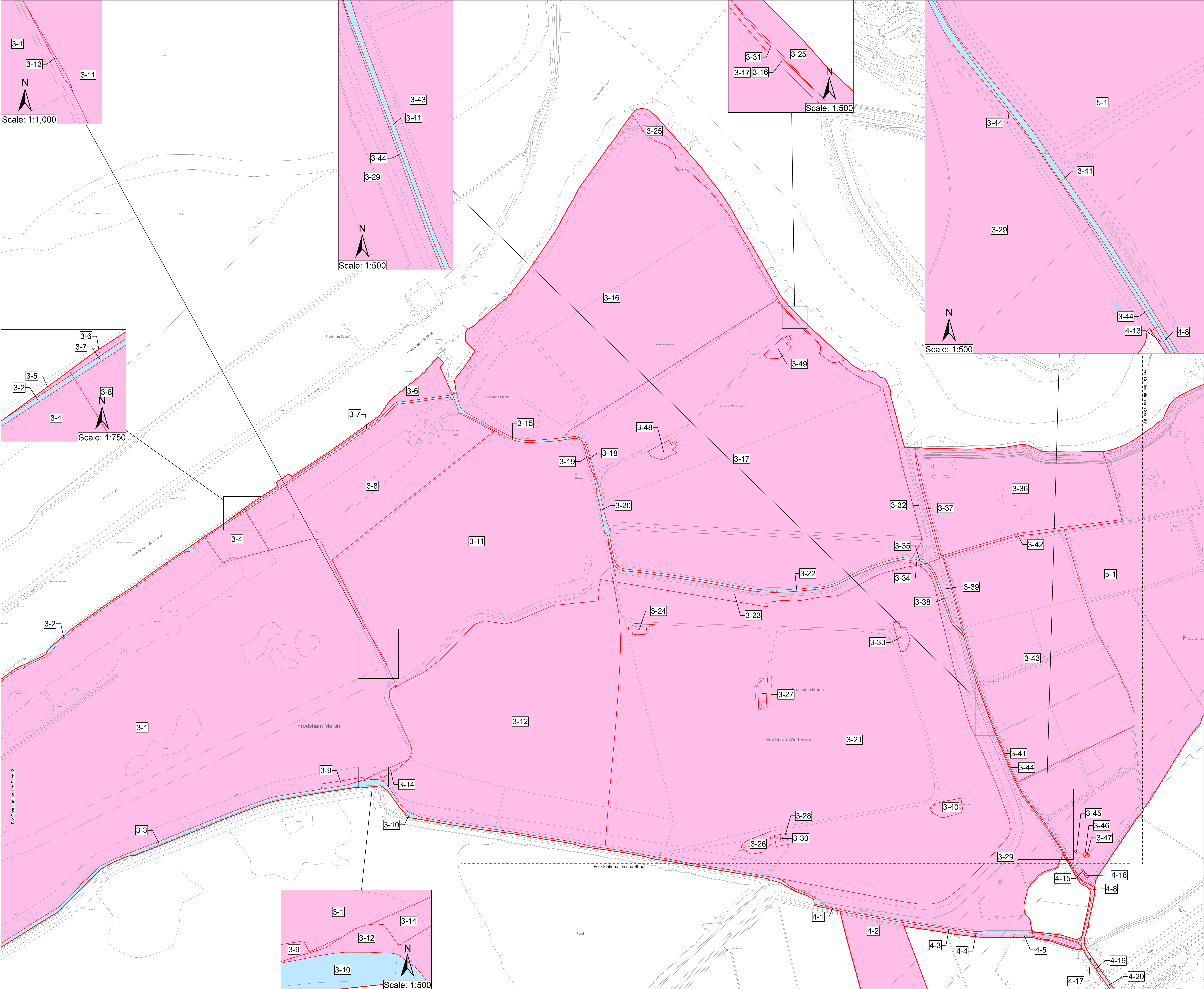
L.O'BRIEN

A.CROW

Drawing reference

081_ARDG_FSF_LP_CL

This document is not to be used in whole or in part other than for the intended purpose and project for which it was prepared and provided.



KEY PLAN

Notes

1. All dimensions, chainages, levels and co-ordinates are in metres unless stated otherwise.

2. These Land Plans should be read in conjunction with other plans and documents in the application for development consent, in particular the Book of Reference, Statement of Reasons, Development Consent Order, and the Land and Right Negotiation Tracker.

Regulation 5(2)(i) and 5(2)(m) - Infrastructure Planning (Applications: Prescribed Forms and Procedure) Regulations 2009

KEY

Order limits

Permanent acquisition of land

Permanent acquisition of new rights over land

© Crown copyright and database rights 2025 Ordnance Survey
AC0000808122. You are permitted to use this data solely to enable you to respond to, or interact with, the organisation that provided you with the data. You are not permitted to copy, sub-licence, distribute or sell any of this data to third parties in any form.

Information produced by HM Land Registry. Crown copyright and database rights 2024. The polygons (including the associated geometry, namely x, y co-ordinates) are subject to Crown copyright and database rights 2024 and are reproduced with the permission of Ordnance Survey.

World Hillshade: Esri, Intermap, NASA, NGA, USGS
World Topographic Map: Sources: Esri, TomTom, Garmin, FAO, NOAA, USGS, © OpenStreetMap contributors, and the GIS User Community

Cubico

SUSTAINABLE INVESTMENTS

Client

FRODSHAM SOLAR LIMITED

N

Designer

Ardent

Project

FRODSHAM SOLAR

Drawing Title

LAND AND CROWN LAND PLANS

SHEET 3 OF 5

Status

FOR DCO SUBMISSION

Revision

P01

Date

29/05/2025

Scale: 1:2,500

@ A0

Spatial Reference System

British National Grid

0

50

100

150

200

250

300

Metres

Drawn By

Checked By

Approved By

J.NEYE-SWIFT

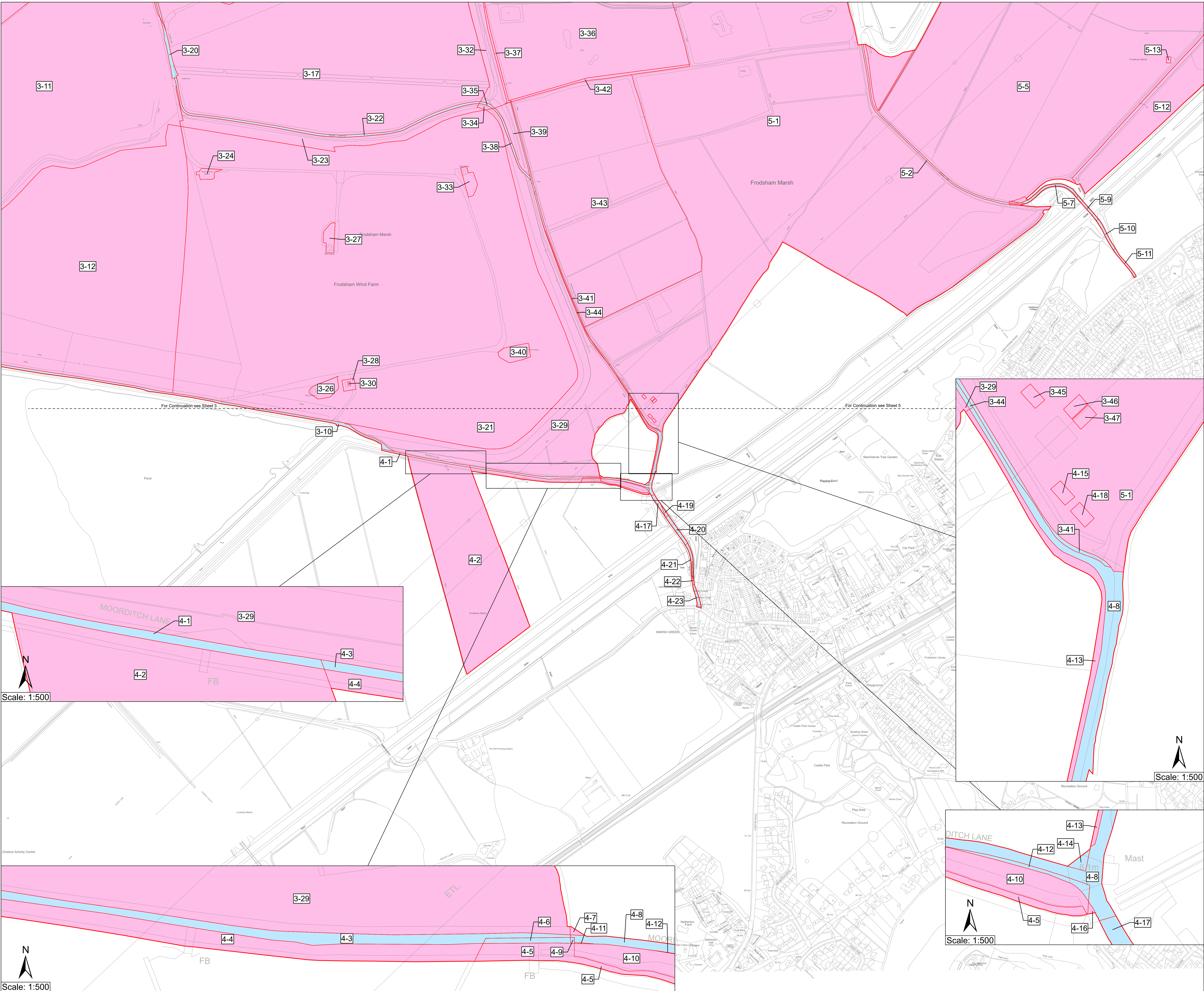
L.O'BRIEN

A.CROW

Drawing reference

081_ARDG_FSF_LP_CL

This document is not to be used in whole or in part other than for the intended purpose and project for which it was prepared and provided.



KEY PLAN

Notes

1. All dimensions, chainages, levels and co-ordinates are in metres unless stated otherwise.

2. These Land Plans should be read in conjunction with other plans and documents in the application for development consent, in particular the Book of Reference, Statement of Reasons, Development Consent Order, and the Land and Right Negotiation Tracker.

Regulation 5(2)(i) and 5(2)(m) - Infrastructure Planning (Applications: Prescribed Forms and Procedure) Regulations 2009

KEY

- Order limits
- Permanent acquisition of land
- Permanent acquisition of new rights over land

© Crown copyright and database rights 2025 Ordnance Survey AC0000808122. You are permitted to use this data solely to enable you to respond to, or interact with, the organisation that provided you with the data. You are not permitted to copy, sub-licence, distribute or sell any of this data to third parties in any form.

Information produced by HM Land Registry. Crown copyright and database rights 2024. The polygons (including the associated geometry, namely x, y co-ordinates) are subject to Crown copyright and database rights 2024 and are reproduced with the permission of Ordnance Survey.

World Hillshade: Esri, Intermap, NASA, NGA, USGS
World Topographic Map: Sources: Esri, TomTom, Garmin, FAO, NOAA, USGS, © OpenStreetMap contributors, and the GIS User Community

Client

FRODSHAM SOLAR LIMITED

Designer

Project

FRODSHAM SOLAR

Drawing Title

LAND AND CROWN LAND PLANS

SHEET 4 OF 5

Status	FOR DCO SUBMISSION	Revision	P01
		Date	29/05/2025

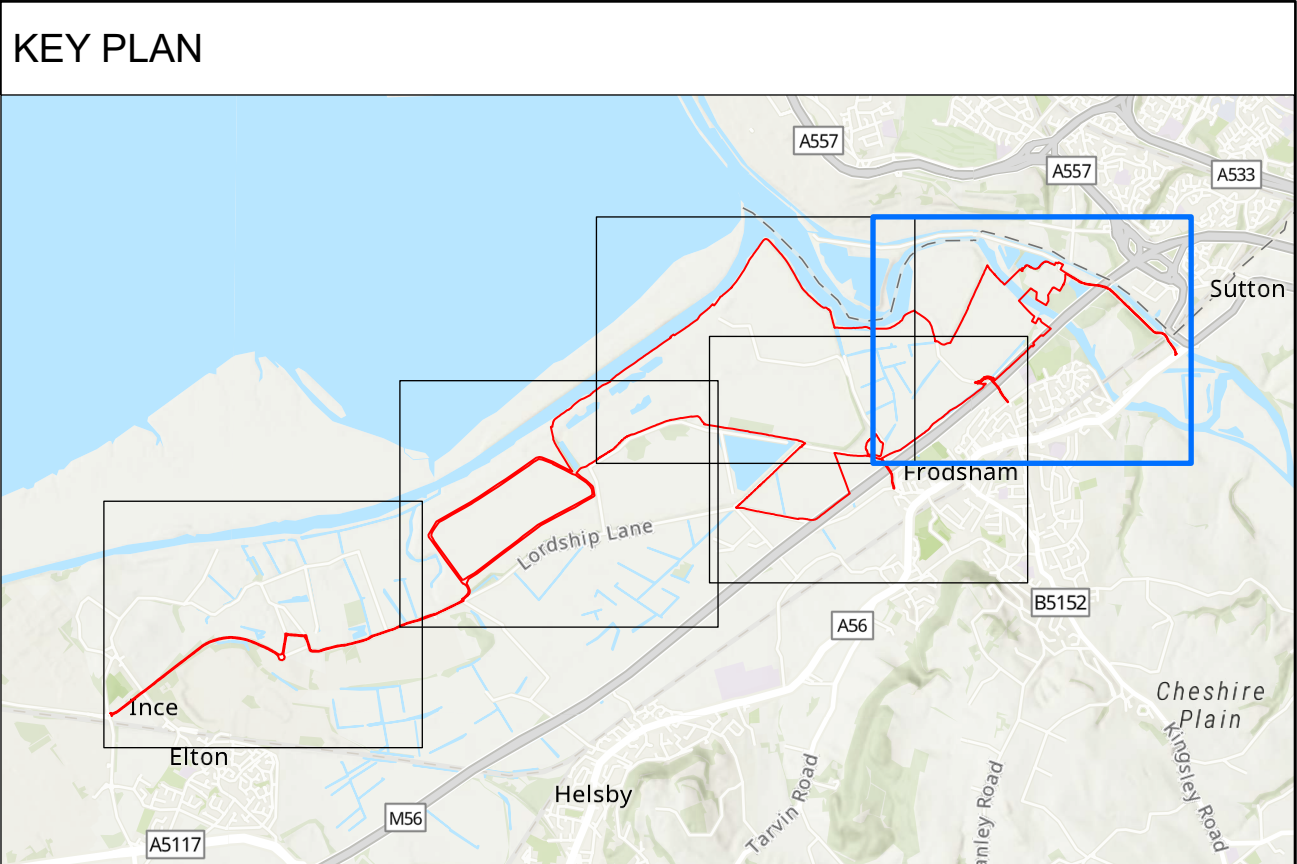
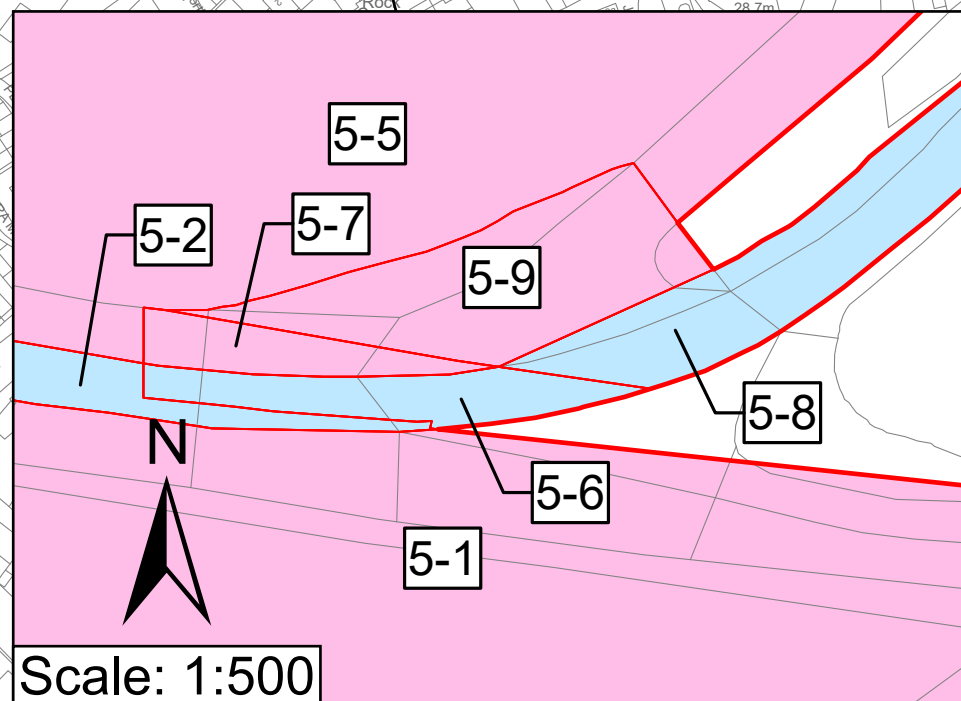
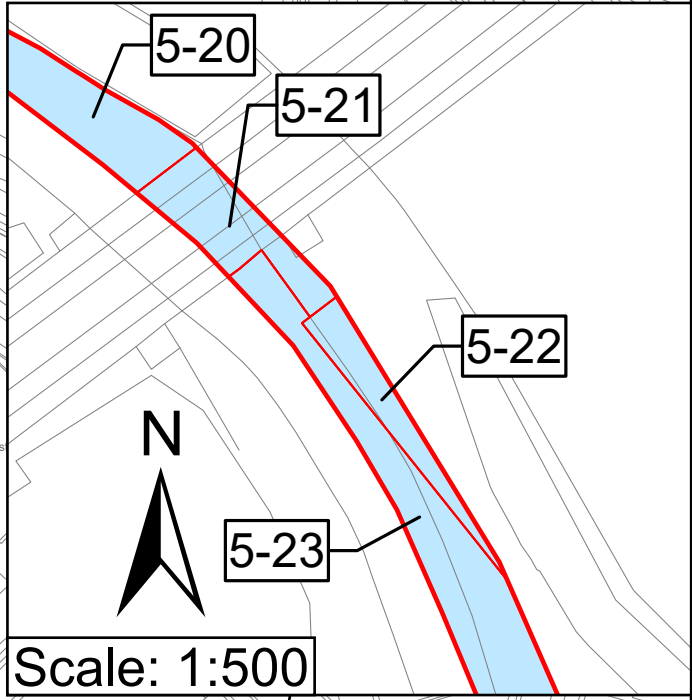
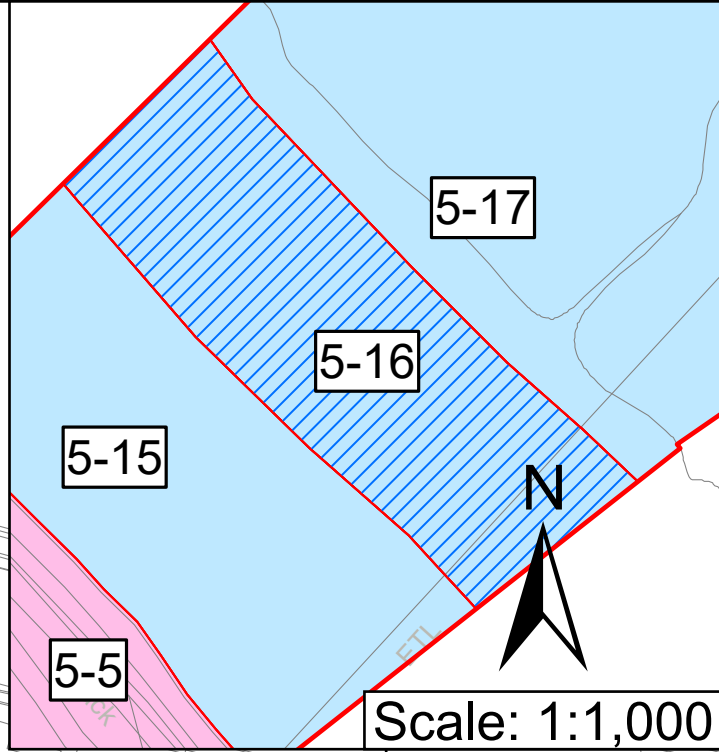
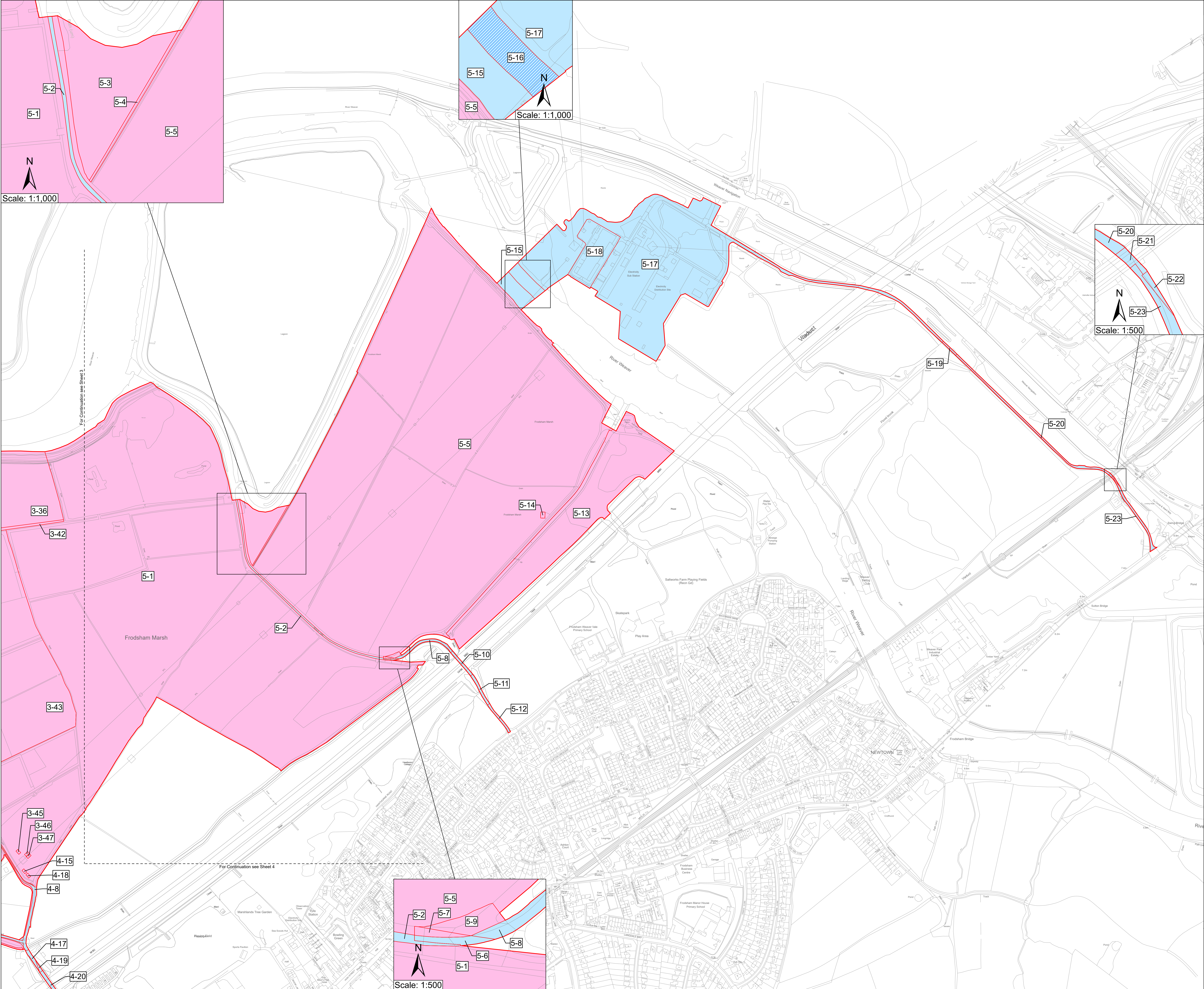
Scale: 1:2,500 @ A0 Spatial Reference System British National Grid

Drawn By	Checked By	Approved By
J.NEYE-SWIFT	L.O'BRIEN	A.CROW

Drawing reference

081_ARDG_FSF_LP_CL

This document is not to be used in whole or in part other than for the intended purpose and project for which it was prepared and provided.



Notes

1. All dimensions, chainages, levels and co-ordinates are in metres unless stated otherwise.

2. These Land Plans should be read in conjunction with other plans and documents in the application for development consent, in particular the Book of Reference, Statement of Reasons, Development Consent Order, and the Land and Right Negotiation Tracker.

Regulation 5(2)(i) and 5(2)(m) - Infrastructure Planning (Applications: Prescribed Forms and Procedure) Regulations 2009

- KEY
- Order limits
 - Permanent acquisition of land
 - Permanent acquisition of new rights over land
 - Crown Land

© Crown copyright and database rights 2025 Ordnance Survey AC0000808122. You are permitted to use this data solely to enable you to respond to, or interact with, the organisation that provided you with the data. You are not permitted to copy, sub-licence, distribute or sell any of this data to third parties in any form.

Information produced by HM Land Registry. Crown copyright and database rights 2024. The polygons (including the associated geometry, namely x, y co-ordinates) are subject to Crown copyright and database rights 2024 and are reproduced with the permission of Ordnance Survey.

World Hillshade: Esri, Intermap, NASA, NGA, USGS
World Topographic Map: Sources: Esri, TomTom, Garmin, FAO, NOAA, USGS, © OpenStreetMap contributors, and the GIS User Community



Client

FRODSHAM SOLAR LIMITED

Designer

Ardent

Project

FRODSHAM SOLAR

Drawing Title

LAND AND CROWN LAND PLANS

SHEET 5 OF 5

Status	FOR DCO SUBMISSION	Revision	P01
Date	29/05/2025		

Scale: 1:2,500	@ A0	Spatial Reference System	British National Grid
0 50 100 150 200 250 300 Metres			

Drawn By	Checked By	Approved By
J.NEYE-SWIFT	L.O'BRIEN	A.CROW

Drawing reference

081_ARDG_FSF_LP_CL

This document is not to be used in whole or in part other than for the intended purpose and project for which it was prepared and provided.